

# PROTOCOL FOR COVID-19 CRUISES TERMINALS EXECUTIVE SUMMARY



Autoridad Portuaria  
Santa Cruz de Tenerife



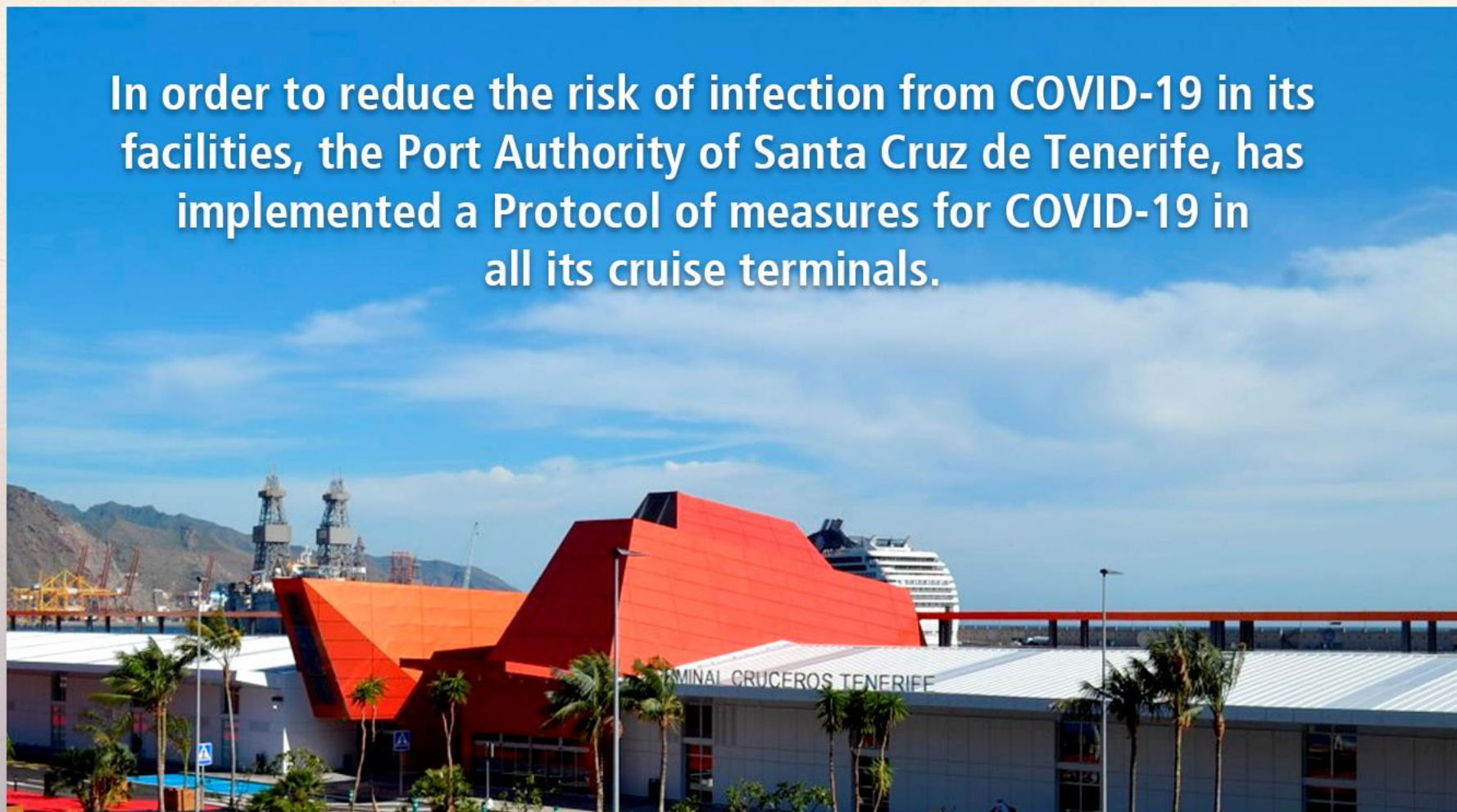




Autoridad Portuaria  
Santa Cruz de Tenerife

# PROTOCOL FOR COVID-19 VIRUS USE BY PORTS OF TENERIFE

In order to reduce the risk of infection from COVID-19 in its facilities, the Port Authority of Santa Cruz de Tenerife, has implemented a Protocol of measures for COVID-19 in all its cruise terminals.





Autoridad Portuaria  
Santa Cruz de Tenerife

# PROTOCOL FOR COVID-19 VIRUS USE BY PORTS OF TENERIFE

# AENOR

**PROTOCOLO  
FRENTE AL COVID-19**

**AUTORIDAD PORTUARIA DE  
SANTA CRUZ DE TENERIFE**

This protocol has been certified by AENOR, which ensures its suitability and strict compliance, providing the necessary protection for all employees and other users of our facilities and services.





Autoridad Portuaria  
Santa Cruz de Tenerife

# MEASURES IMPLEMENTED TO REDUCE THE RISK OF INFECTION

## EMPLOYEES

The Ports of Tenerife ensure that both its employees and companies that work in its facilities apply measures to reduce the risk of infection.  
All employees have been trained to comply to and monitor the measures implemented.



## FACILITIES, USERS AND PASSENGERS

Measures have been implemented in all facilities and in the conditions of their use.  
The established rules are mandatory for everybody.







Autoridad Portuaria  
Santa Cruz de Tenerife

# MEASURES IMPLEMENTED FOR ALL EMPLOYEES



## MASKS

The use of FFP2 masks is mandatory inside the facilities and vehicles



## SAFETY DISTANCE 2 M

All employees must always maintain whenever possible an interpersonal distance of 2 metres



## TRAINING

The employees of the Ports of Tenerife have been trained in the correct application in the Protocol against COVID-19





Autoridad Portuaria  
Santa Cruz de Tenerife

# MEASURES IMPLEMENTED FOR ALL EMPLOYEES



## COMPANY COORDINATION

Coordination of activities with companies working in the facilities to ensure compliance of the protocol



## REDUCING CONTACT

The reduction of contact between employees



## TAKING DAILY TEMPERATURE

Before entering their place of work the temperature of all employees is taken

## DAILY COMPLIANCE CONTROLS

Correct compliance to the Protocol is ensured by permanent and daily controls







Autoridad Portuaria  
Santa Cruz de Tenerife

# MEASURES IMPLEMENTED FOR FACILITIES, USERS AND PASSENGERS



## MASKS

Mandatory use of masks in the facilities



## HYDROALCOHOLIC GEL

Arrangement of hydroalcoholic gel dispensers



## NON-CONTACT TAPS

Installation of non-contact taps in the toilets



## MAXIMUM CAPACITY

Reduction in capacity



## SAFETY DISTANCE 2 M

Respect the interpersonal distance of 2 metres



## SCREENS

Installation of screens in the areas of attention to the public

INFO **COVID 19**





Autoridad Portuaria  
Santa Cruz de Tenerife

# MEASURES IMPLEMENTED FOR FACILITIES, USERS AND PASSENGERS



## RESTRICTIONS IN THE USE OF SPACES

Ensuring the safety distance for  
seats and lifts



## OPEN DOORS

Permanant ventilation in our  
installations and vehicles



## ENTRY AND EXIT ROUTES

Route marking to minimize contact

INFO **COVID 19**

## CLEANING AND DISINFECTION



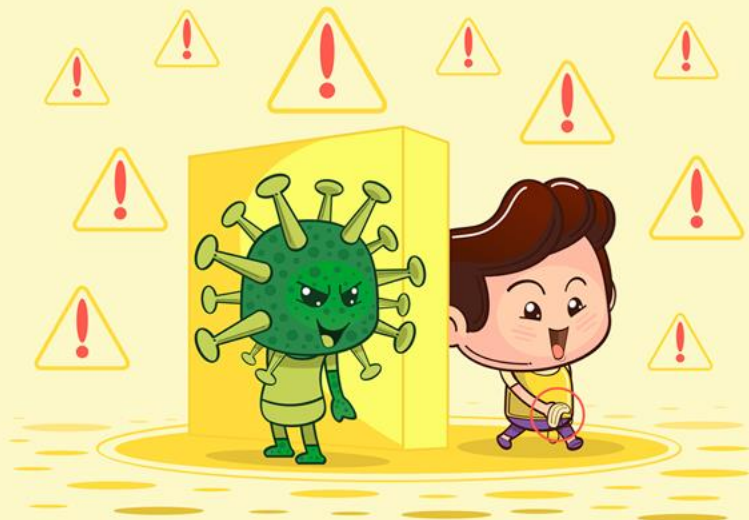
Cleaning and disinfection  
Protocols have been reinforced





Autoridad Portuaria  
Santa Cruz de Tenerife

# ACTION AGAINST POSSIBLE CASES OF COVID-19



In the event that any person presents symptoms compatible with COVID-19 must immediately isolate and notify medical services and the health authorities

We have health personnel and isolation areas for people with symptoms caused by COVID-19



## PROTOCOL FOR ACTION AGAINST POSSIBLE CASES

**1.** Isolation of a person showing symptoms

**2.** Informing medical services

**3.** Notifying health authorities





# HOW CAN ENSURE COMPLIANCE AND IMPROVEMENT OF THE PROTOCOL?

**1.** A permanent control is carried out in compliance to the Protocol and its measures



**2.** The adequacy of the Protocol is ensured by constantly review, conducting drills and seeking improvements





# THANK YOU FOR PLACING YOUR FAITH IN US!

**If you require further information**



[www.puertosdetenerife.org](http://www.puertosdetenerife.org)  
[prevencionrl@puertosdetenerife.org](mailto:prevencionrl@puertosdetenerife.org)



Autoridad Portuaria  
Santa Cruz de Tenerife