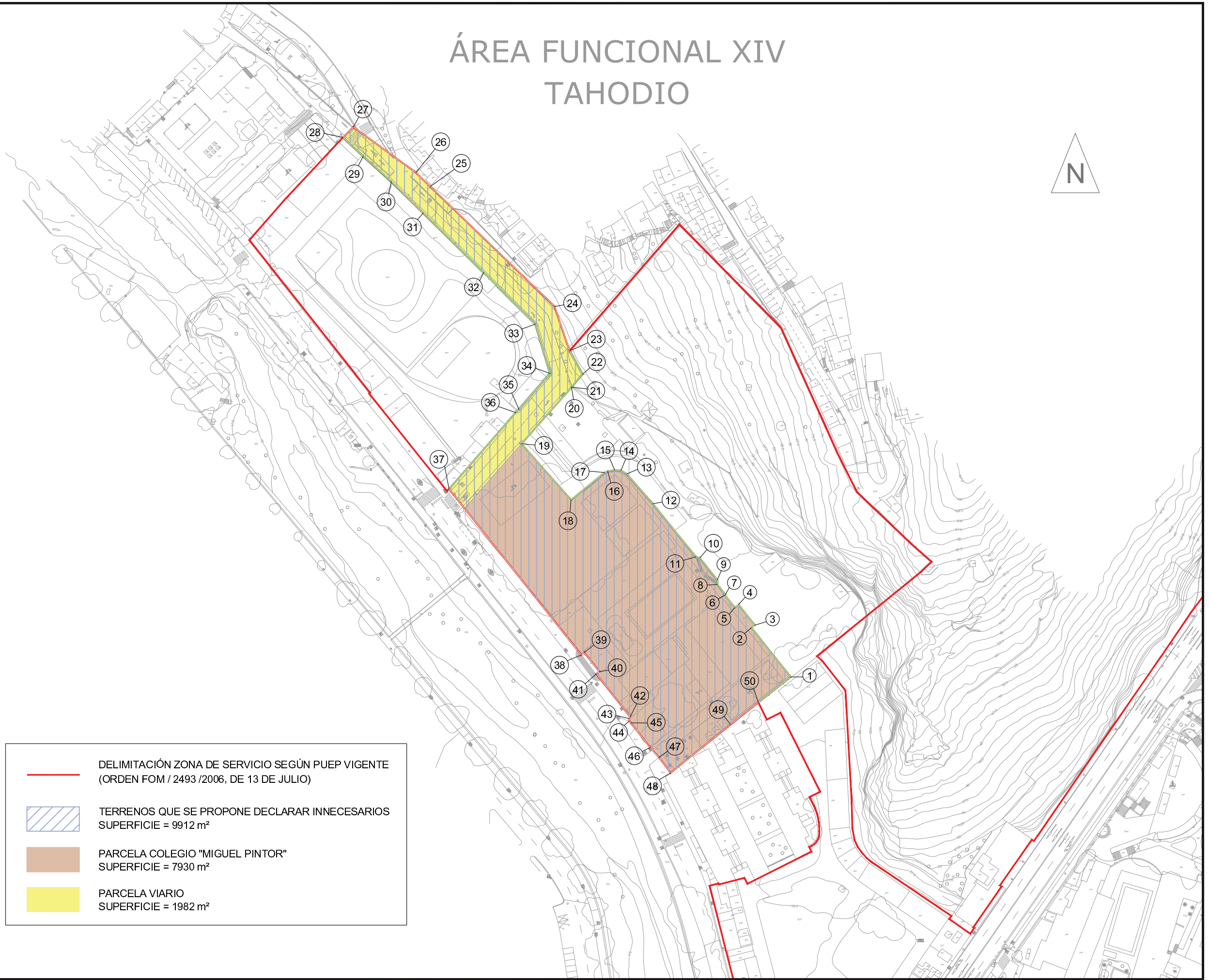


# ÁREA FUNCIONAL XIV TAHODIO



Tabla de coordenadas (WGS-84)

PUNTO	X	Y
1	378367.04	3151138.58
2	378351.06	3151158.67
3	378352.40	3151159.74
4	378345.78	3151168.13
5	378344.28	3151166.94
6	378340.20	3151172.05
7	378340.38	3151172.22
8	378337.11	3151176.41
9	378337.13	3151178.22
10	378329.96	3151187.29
11	378328.31	3151187.68
12	378310.76	3151209.38
13	378300.08	3151221.57
14	378297.72	3151222.97
15	378295.10	3151223.16
16	378292.26	3151222.70
17	378290.97	3151222.13
18	378277.25	3151210.97
19	378257.00	3151233.96
20	378277.50	3151256.90
21	378277.32	3151257.06
22	378281.90	3151262.32
23	378276.65	3151271.89
24	378270.55	3151290.01
25	378219.67	3151339.08
26	378213.84	3151344.79
27	378188.24	3151363.44
28	378184.08	3151359.17
29	378192.31	3151351.51
30	378203.76	3151341.22
31	378216.84	3151328.27
32	378241.56	3151303.93
33	378262.74	3151282.85
34	378268.76	3151262.68
35	378255.99	3151247.87
36	378254.68	3151246.69
37	378227.35	3151215.48
38	378281.48	3151147.56
39	378282.68	3151148.51
40	378288.84	3151140.80
41	378287.59	3151139.80
42	378301.47	3151122.25
43	378301.14	3151121.53
44	378301.18	3151120.56
45	378301.67	3151119.78
46	378309.61	3151109.73
47	378313.21	3151105.69
48	378317.97	3151099.34
49	378342.52	3151119.18
50	378353.85	3151128.15



- DELIMITACIÓN ZONA DE SERVICIO SEGÚN PUEP VIGENTE (ORDEN FOM / 2493 /2006, DE 13 DE JULIO)
- TERRENOS QUE SE PROPONE DECLARAR INNECESARIOS SUPERFICIE = 9912 m<sup>2</sup>
- PARCELA COLEGIO "MIGUEL PINTOR" SUPERFICIE = 7930 m<sup>2</sup>
- PARCELA VIARIO SUPERFICIE = 1982 m<sup>2</sup>